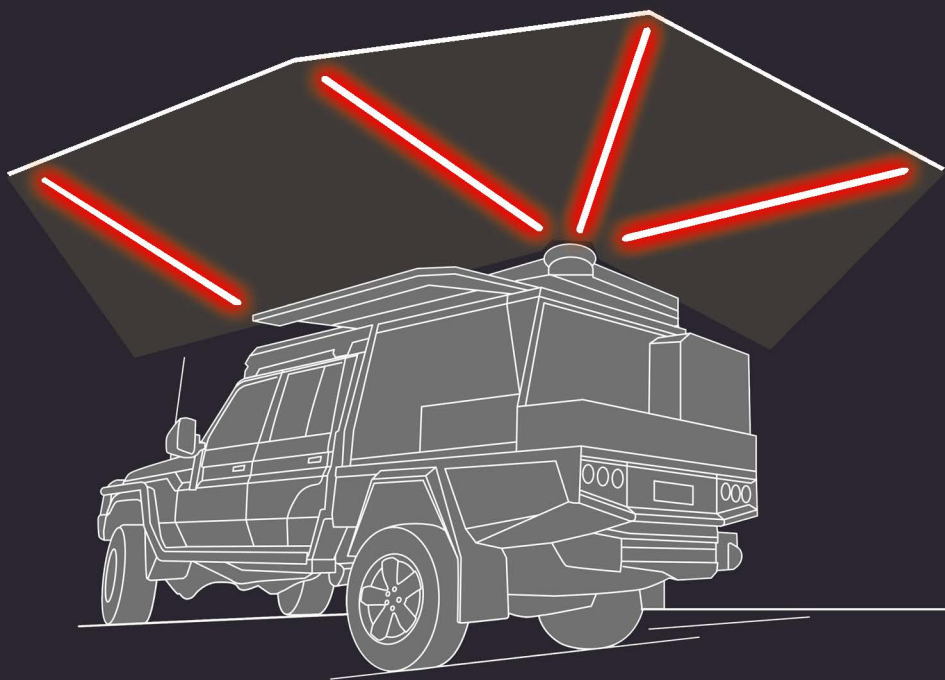


AllSpark

POWERING YOU OFFROAD



4 BAR LED LIGHT CAMPING KIT

USER MANUAL

INTRODUCTION

Welcome! Thanks for choosing the AllSpark 4 Bar LED Light camping kit.

We hope you will thoroughly enjoy this product for years to come.

SAFETY WARNING

- **The light kit must be used only for the prescribed purpose.**

Otherwise, the manufacturer shall not be liable for any damage or injuries resulting from misuse. To use the light kit properly, please closely observe the instructions found in the manual.

- **Keep children away from electrical equipment.**

Make sure children are under supervision when operating the light kit.

- **Make sure the light kit operates in its designated voltage and temperature range.**

- **Do not damage or pull on cables.**

Pulling on the cables to remove the lights may cause severe damage or even electricity leakage.

- **Your controllers are not waterproof.**

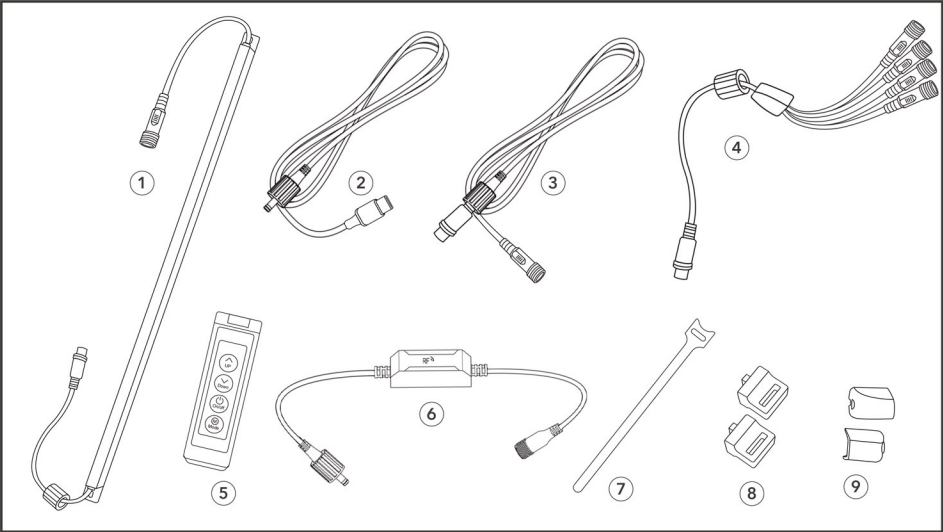
Please position them where they will not contact any water.

PROPERTIES PER LIGHT BAR UNIT

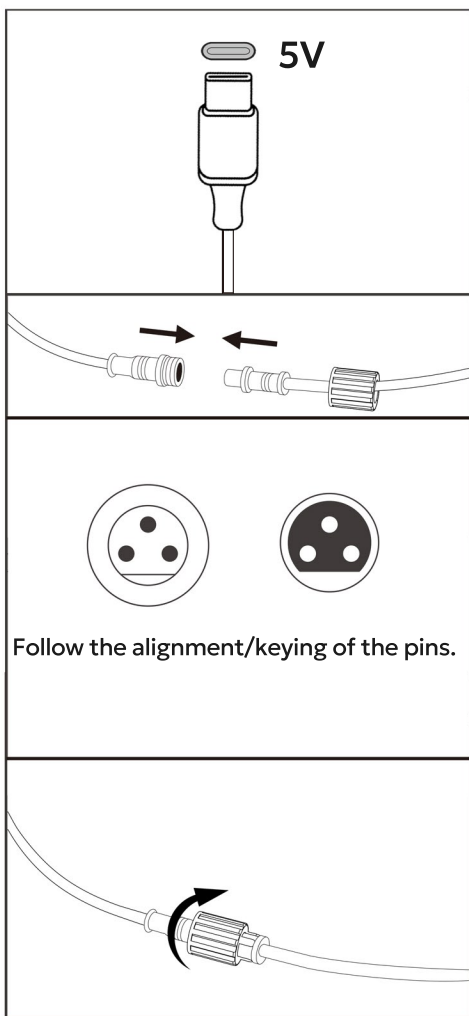
Input voltage	5V DC		
Light source	108 x SMD2835 LED		
Light modes	White	Red	White + red
Rated luminous flux	450lm	250lm	700lm \pm 10%
Colour rendering	>85 Ra		
index Rated current	1.4A	1.5A	2.68A
Rated power	7W	7.5W	13W
Light bar length	50cm		
Structural material	Aluminum		
Lens material	Pigmented polycarbonate		
Ingress protection	IP65		
Working temperature	-20 ~45 °C		

PARTS LIST

Index	Item name	Item qty.	Item details
1	LED light bars	4	3-pin female – 3-pin male Length: 50cm
2	Power lead	1	5V USB-C male – DC male Length: 2m
3	Extension cable	1	3-pin female – 3-pin male Length: 2m
4	Splitter cable	1	3-pin female – 3-pin male x 4
5	Remote dimmer switch	1	
6	Remote RF receiver	1	DC female – 3-pin male
7	Velcro straps	10	
8	Velcro strap mounts	10	
9	Light bar caps	8	



SETUP GUIDE: WIRING



Step 1

Connect the (2) power lead's USB-C male plug to your vehicle's USB-C socket.

Step 2

Connect the (3) power lead's DC male plug to the (6) RF receiver's DC female socket.

Step 3

Connect the (6) RF receiver's 3-pin male plug to the (4) splitter cable's 3-pin female socket. Watch the alignment/keying of the pins.

Step 4

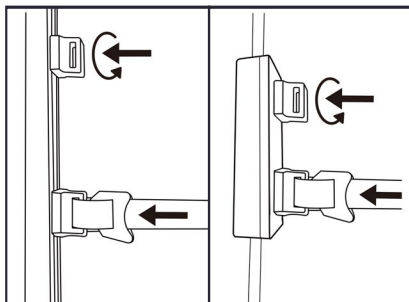
Similarly, connect the (1) light bars' 3-pin female sockets to the (4) splitter cable's 3-pin male plugs. Watch the alignment/keying of the pins.

Optionally add an (3) extension cable in the interconnect following the 3-pin connections.

Step 5

Once all connections are proven to be working, tighten the caps on the cables to their receptacles to secure the connections.

SETUP GUIDE: MOUNTING

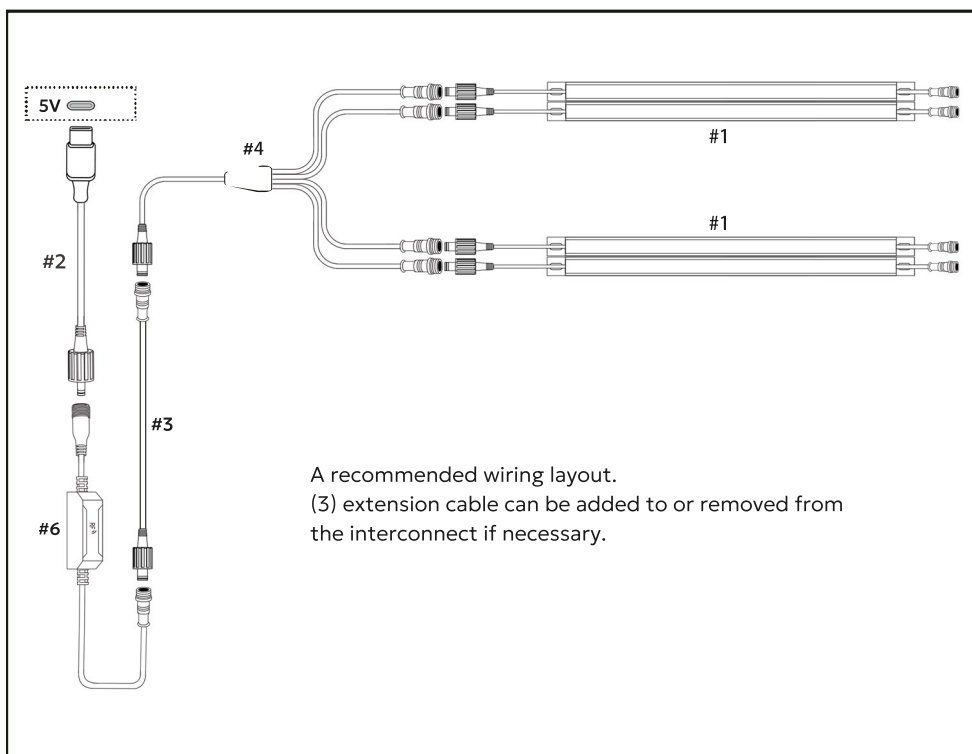


Insert the (8) Velcro strap mounts onto the back side of your (1) light bar, (5) remote dimmer switch or (6) remote RF receiver. Twist them till they are tightened.

At least 2 mounts per light unit are needed to secure the mounting.

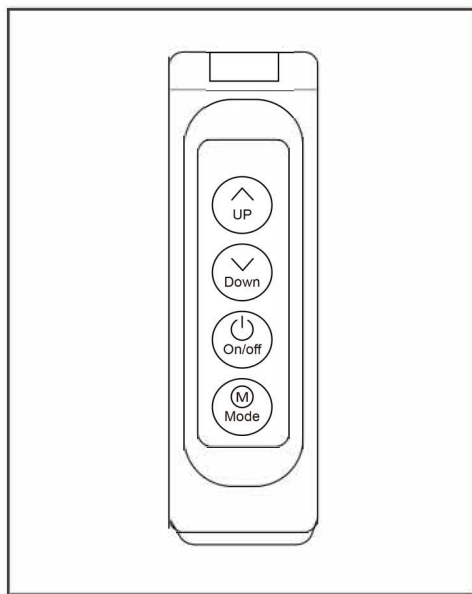
Insert the (7) velcro straps in the slots on the mounts. Loop the fastener straps around a pole/bar on your installation and tighten them.

RECOMMENDED WIRING LAYOUT



A recommended wiring layout.
(3) extension cable can be added to or removed from the interconnect if necessary.

DIMMER SWITCH GUIDE



First-time use

The (5) remote dimmer switch needs to be paired with the kit's (6) RF receiver on first-time use. Once the kit is connected to the power source, press and hold the "UP" and "DOWN" keys on the remote switch. If the LED strip flashes 5 times, the remote switch and the receiver have successfully paired. You can always do this to pair the remote switch with the receiver again.

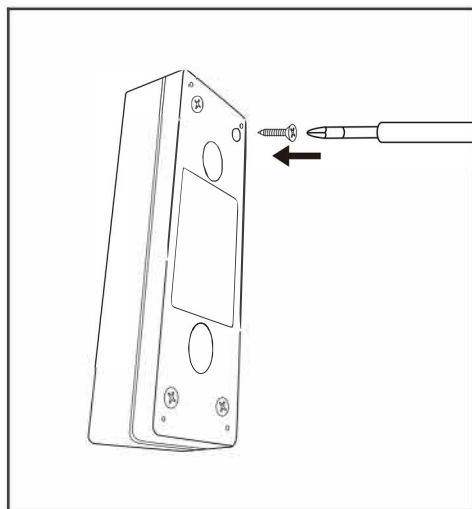
Daily use

When the light is off:

Press "ON/OFF" to turn on the light strip.

When the light is on:

- Press "MODE" to switch between 3 lighting modes: White, red, both (hybrid).
- Press "UP" or "DOWN" to turn the light brighter or dimmer.
- Press "ON/OFF" to turn off the light strip.



Battery replacements for the remote dimmer switch

- Step 1:** When the light is off, loosen the 4 screws with the appropriate screwdrivers, and remove the back shell.
- Step 2:** Remove the soft rubber cover underneath the back shell.
- Step 3:** Loosen the 2 screws that secure the PCB.
- Step 4:** Remove the 2 CR1220 coin-cell batteries from the battery holder. Insert new batteries in the holder according to the correct polarity.
- Step 5:** Reverse the steps mentioned above.
- Step 6:** Pair the remote dimmer switch with the unit again as mentioned in "First time use"

FREQUENTLY ASKED QUESTIONS

Q Is everything waterproof?

A The LED strip is waterproof with the rating of IP65 - dust-tight and waterjetproof. The rating does not cover immersion, therefore submerging the LED strip underwater is considered misuse.

The RF receiver/switch modules and the cabled dimmer switch are not waterproof.

Q Can I replace the batteries of my remote dimmer switch?

A Yes, but ensure that this is only done by people capable of doing so without damaging the parts. Replacing the batteries does not affect warranty, but damaging the product in the process is considered misuse and will affect warranty.

Q How many light bars can I run from one dimmer switch, one after another?

A You can run up to 4 light bars this way.

Q Where do I send back items that may need to be replaced under warranty?

A Please contact your place of purchase for details.



2/29 Prestige Parade

Wangara WA 6065

Email: contact@offroadliving.com.au

Website: www.offroadliving.au

TEL: (08) 62056868



MADE IN CHINA

SKU: AS-4BARLEDKIT